

MOSAIC

# ALLISON



First Look Book

**We're excited to be back in West Coquitlam with our latest community of 1, 2 & 3 bedroom homes at Allison.**

**Allison is tucked away in a single family neighbourhood, but with easy access to the Evergreen Line, Simon Fraser University and Lougheed Town Centre.**

**Featuring Mosaic's classic white-brick architecture, homes at Allison will have 10-ft tall ceilings for more volume and light. Discover our new interior look and feel with a fresh set of colour schemes in Rich Navy, Oyster Grey or White.**



# Allison by Mosaic





# Inside the Home

Bond Series Kitchen in Rich Navy





# Inside the Home

Bond Series Kitchen in Oyster Grey



# Inside the Home

Bond Series Kitchen in White





# Inside the Home

Corner Eden Series Home in Oyster Grey



# Inside the Home

Bond Series Bathroom in Oyster Grey



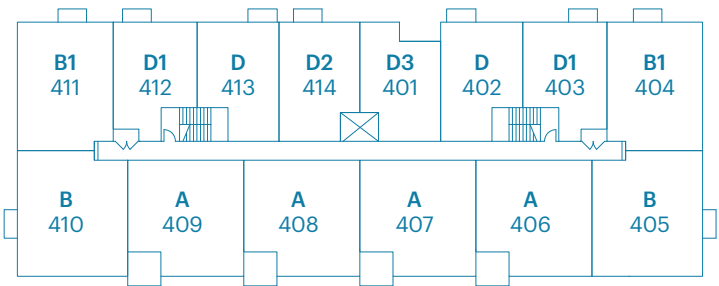


# Building Plan

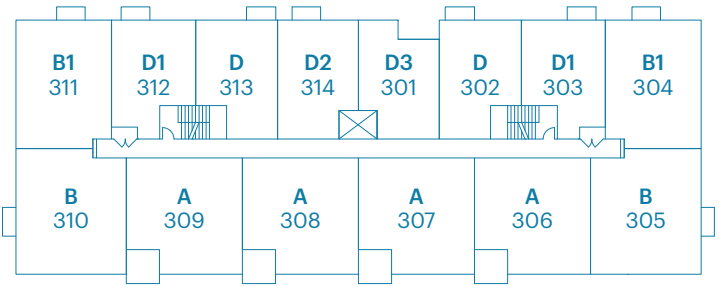
West Building



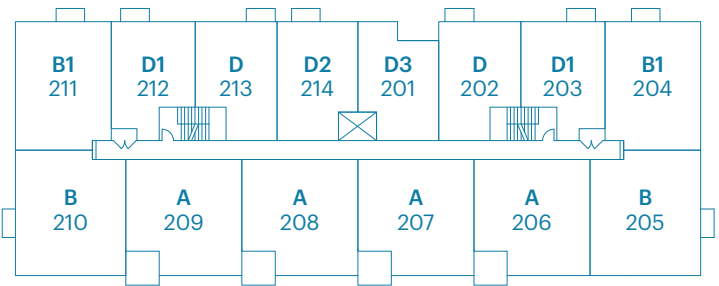
Level 4



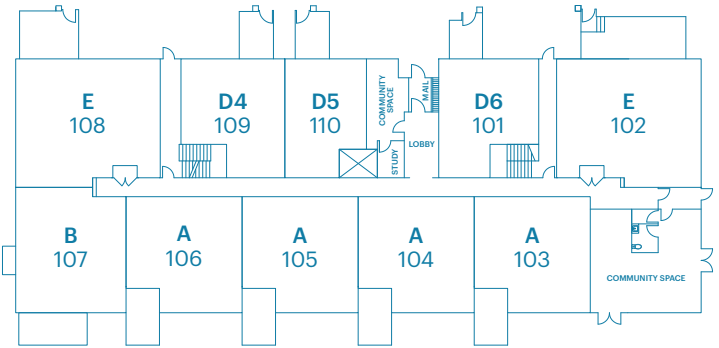
Level 3



Level 2



Level 1

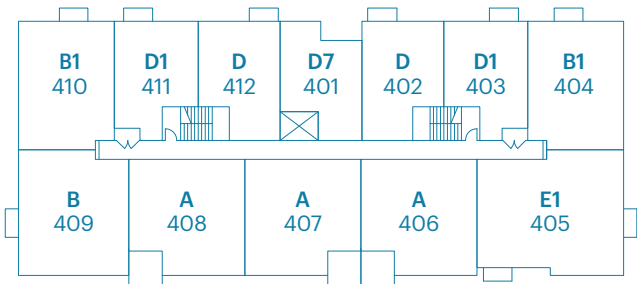


# Building Plan

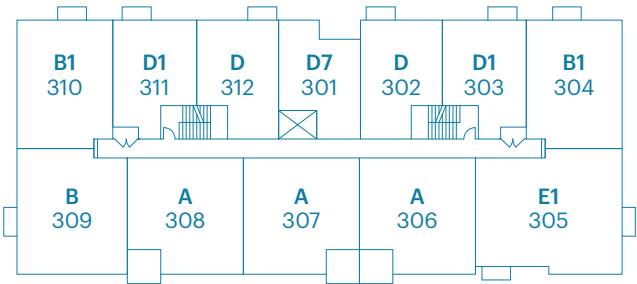
East Building



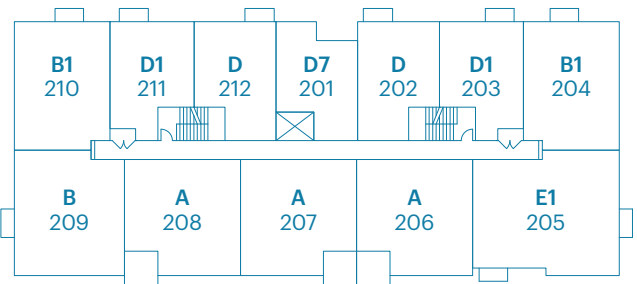
Level 4



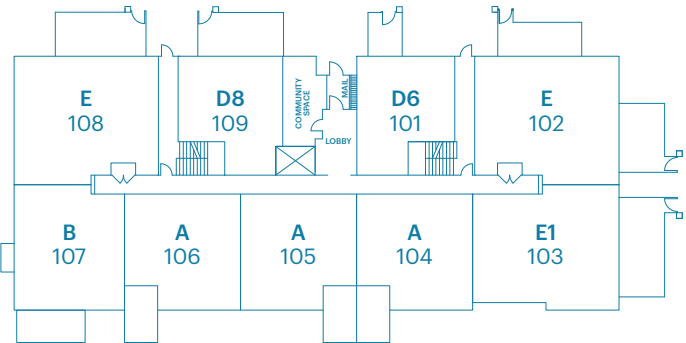
Level 3



Level 2



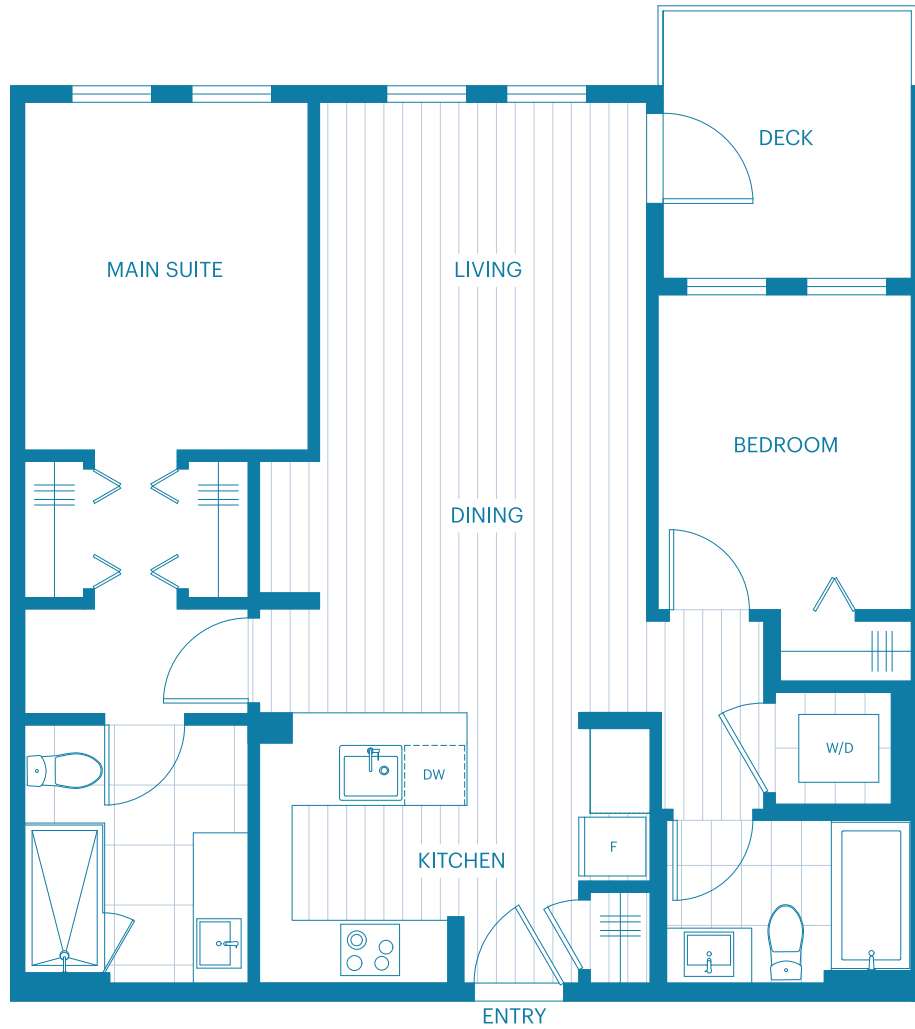
Level 1





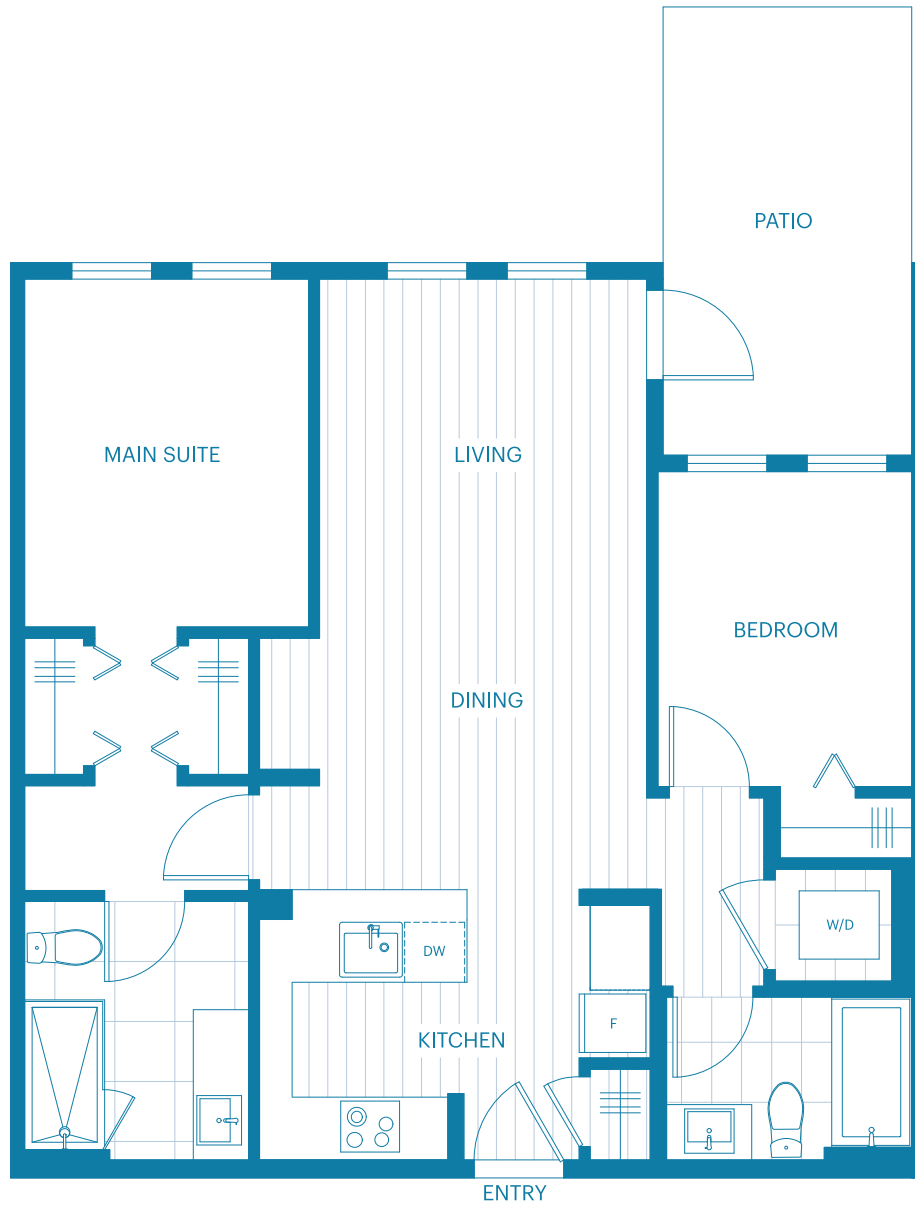
# Acton A Plan 2 Bedroom

861 sq ft



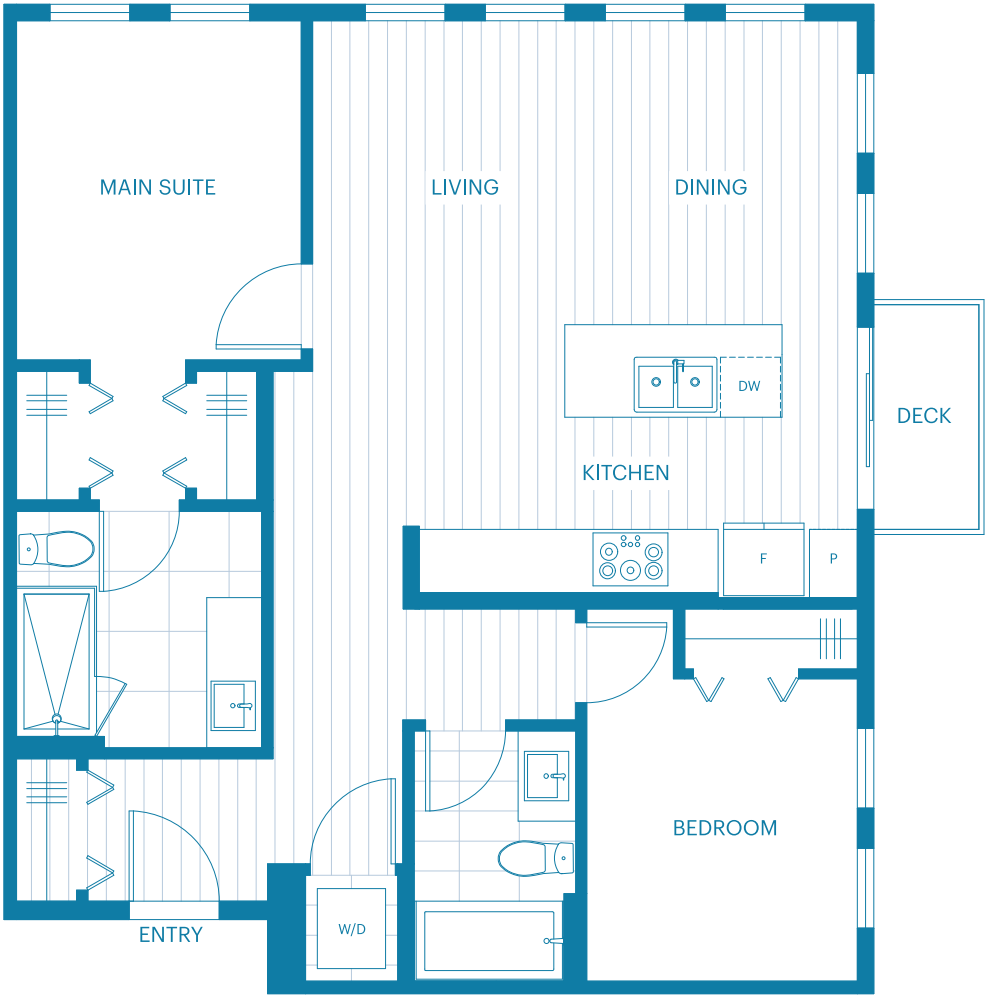
# Acton A Plan 2 Bedroom

861 sq ft



# Bond B Plan Corner 2 Bedroom

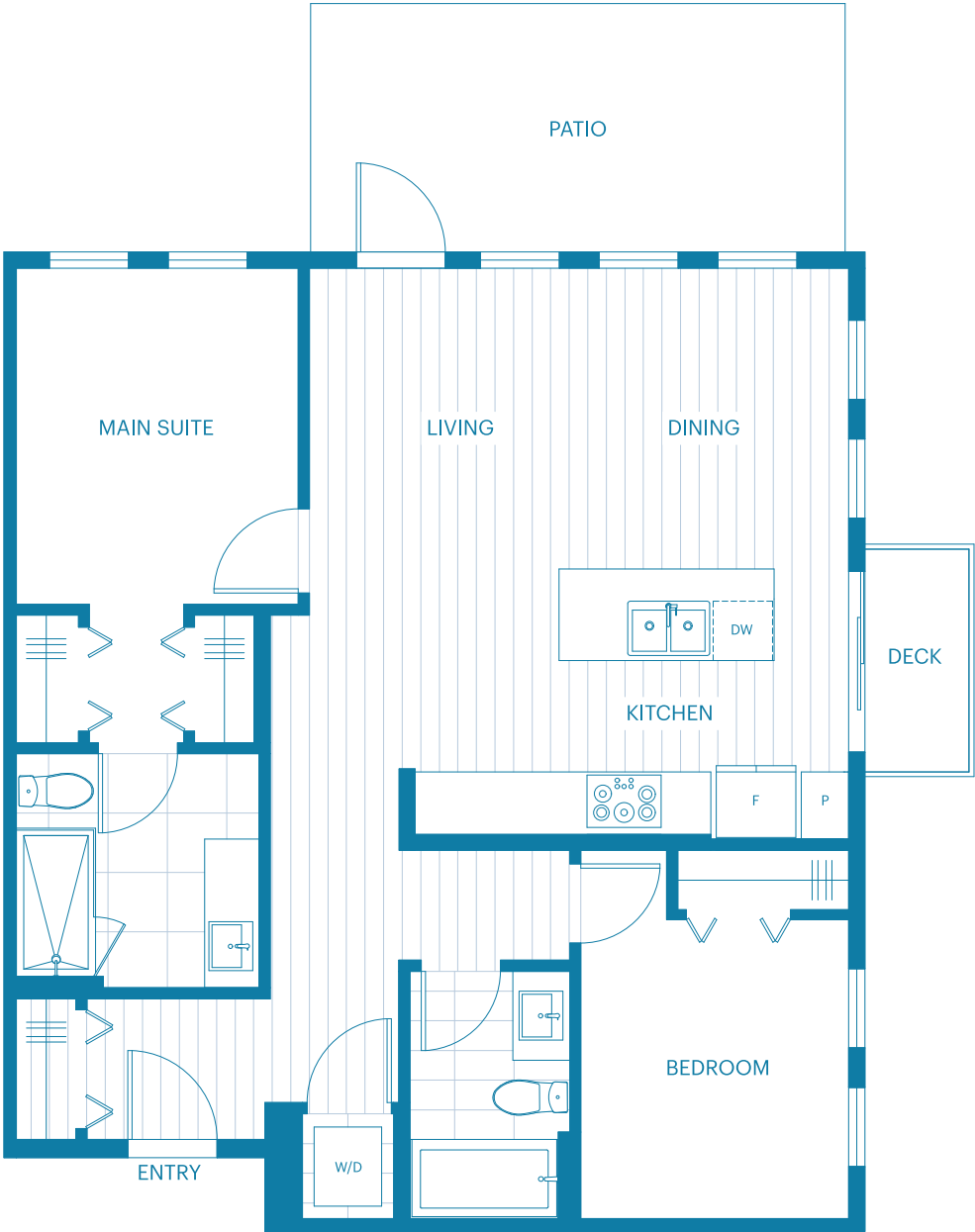
926 sq ft





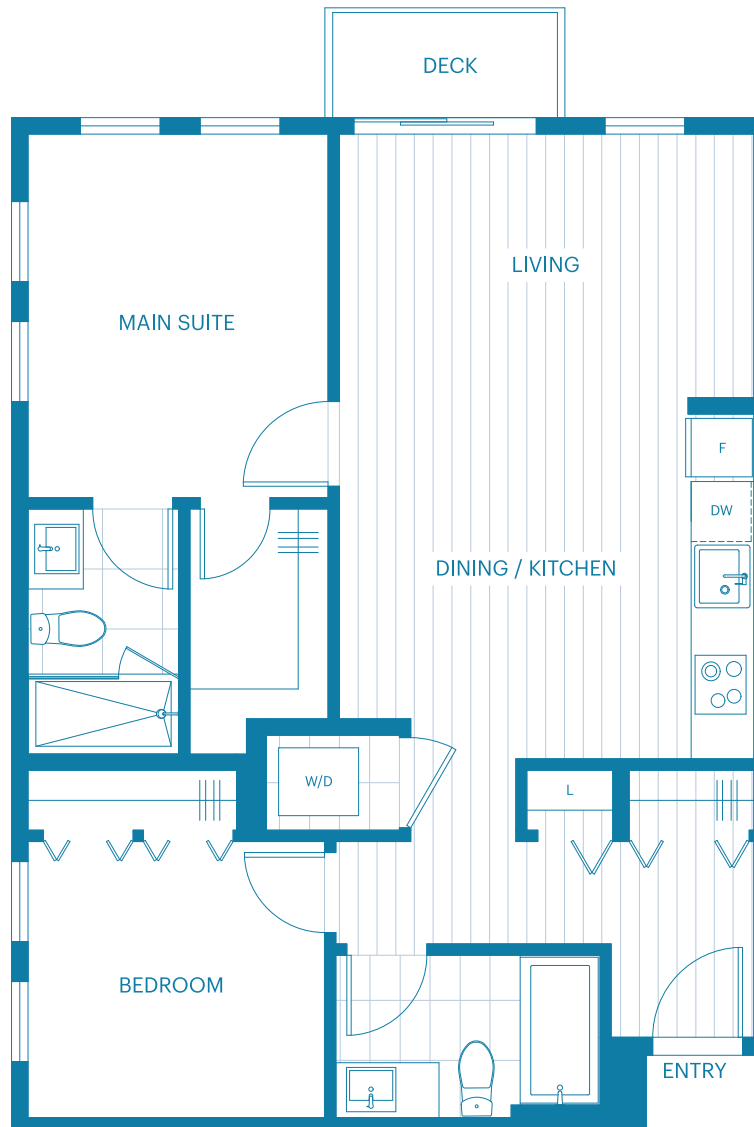
# Bond B Plan Corner 2 Bedroom

926 sq ft Home 107



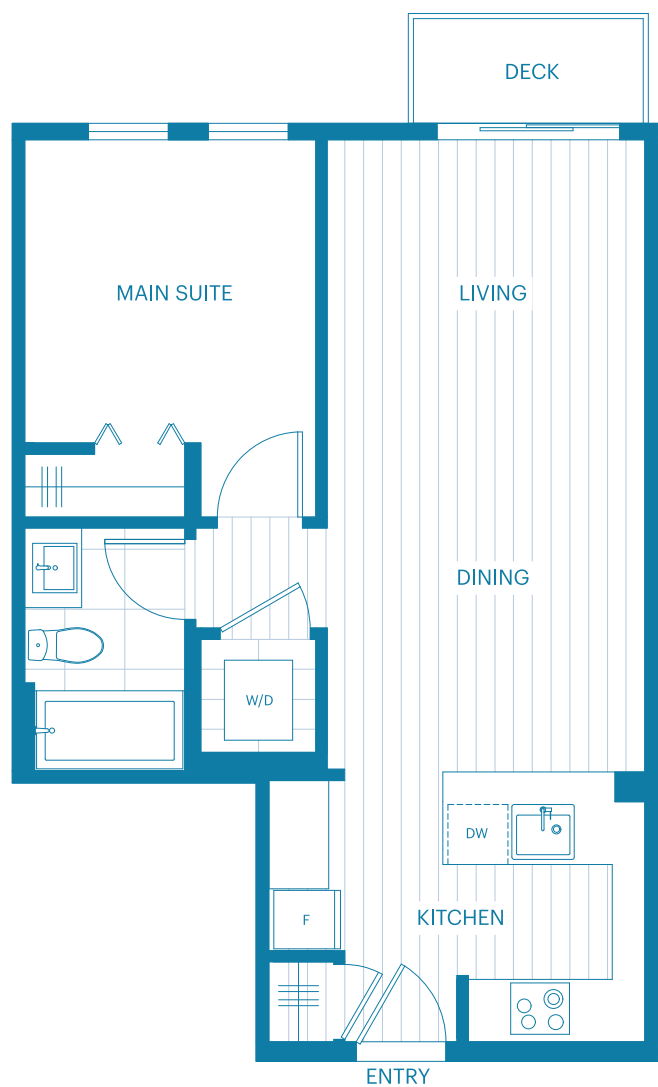
# Bond B1 Plan Corner 2 Bedroom

829 sq ft



# District D Plan 1 Bedroom

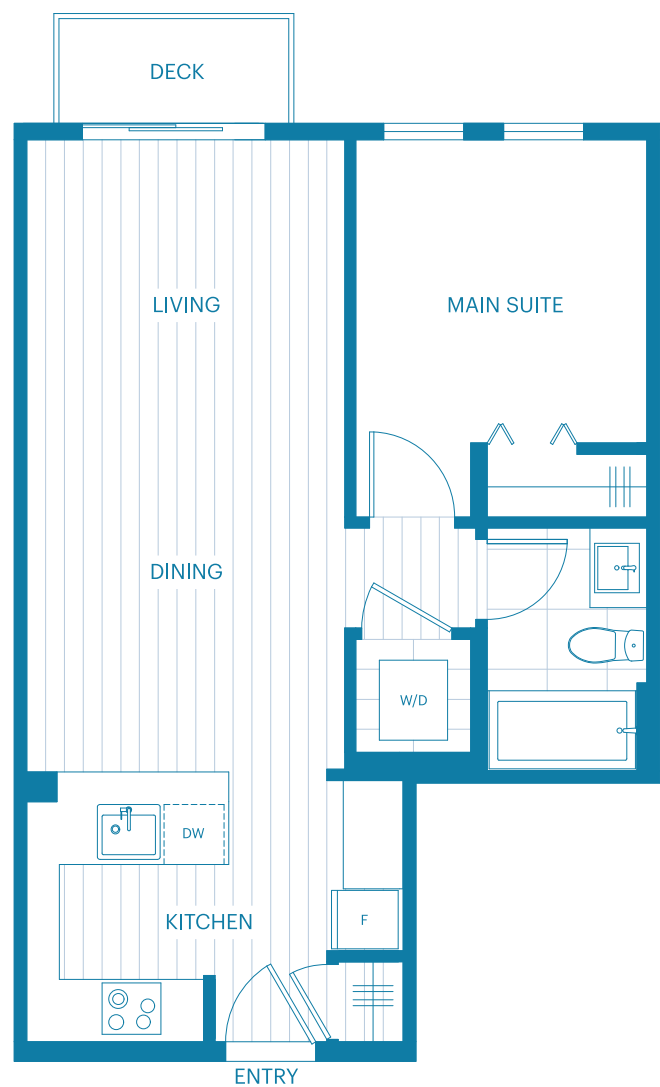
592 sq ft





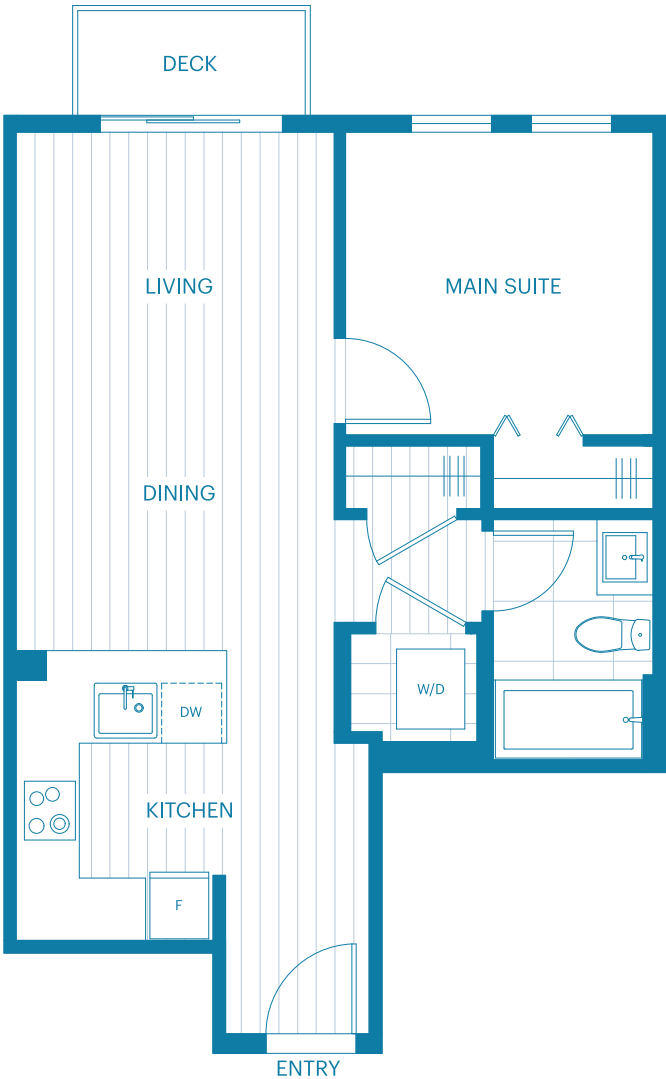
# District D Plan 1 Bedroom

592 sq ft Home 02



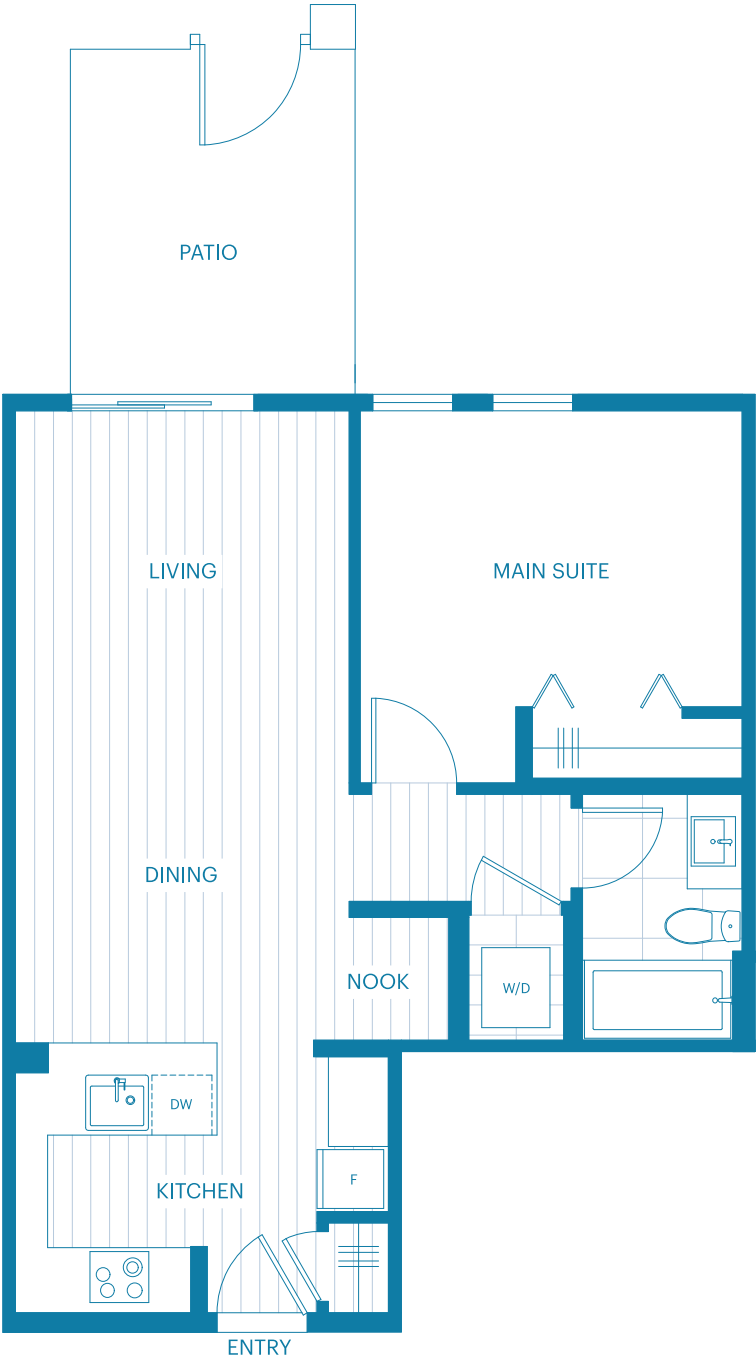
# District D1 Plan 1 Bedroom

570 sq ft



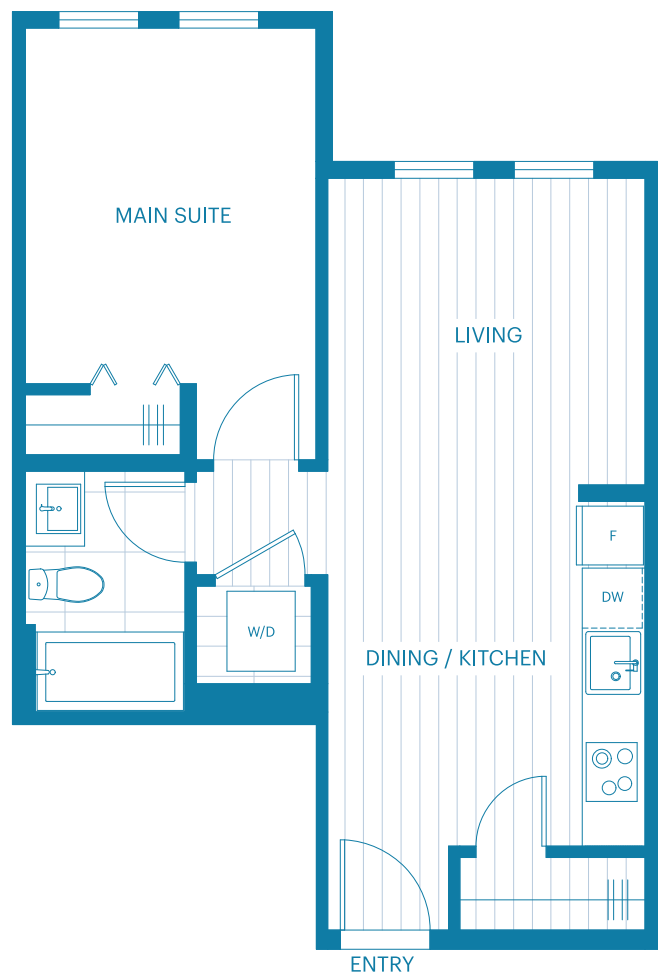
# District D6 Plan 1 Bedroom & Nook

667 sq ft Home 101 East



# District D7 Plan 1 Bedroom

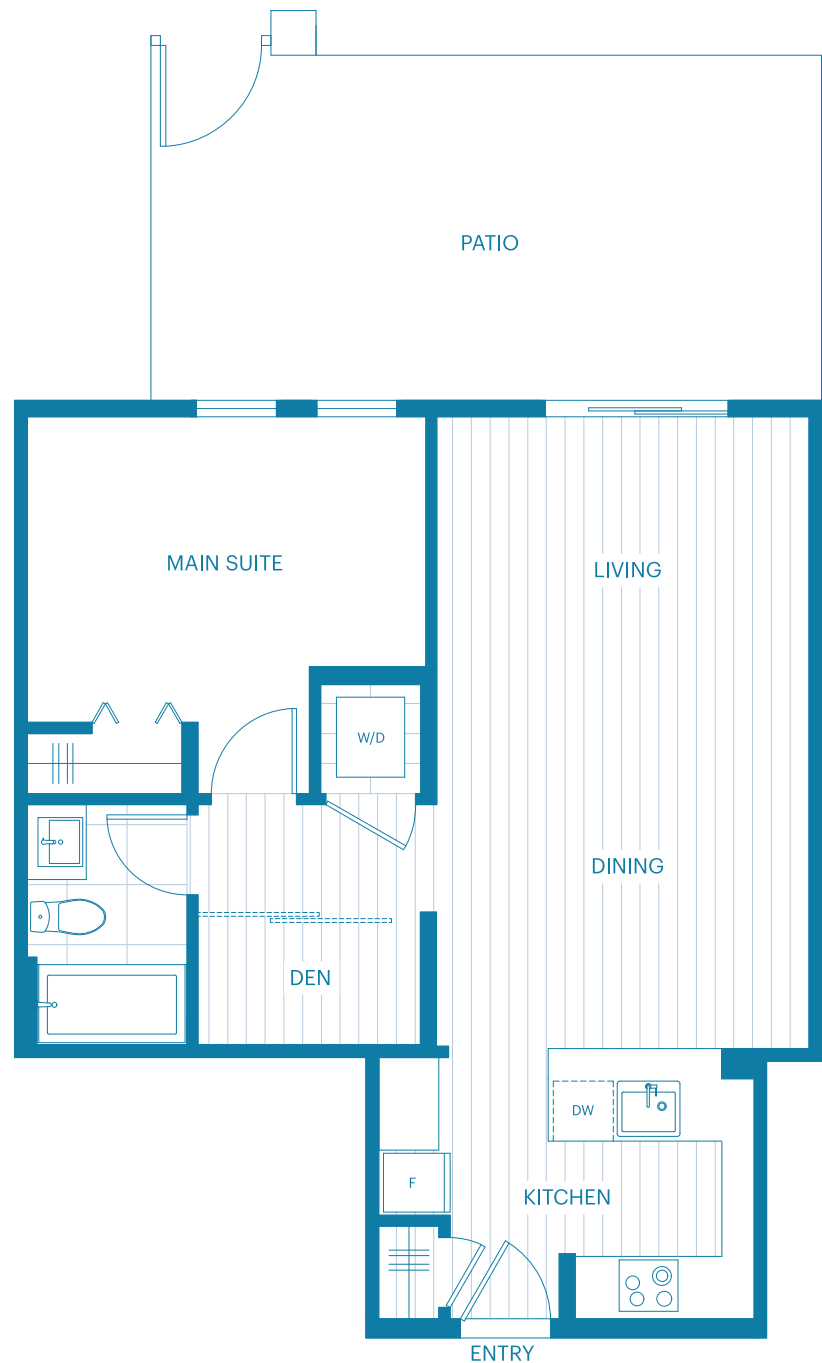
538 sq ft





# District D8 Plan 1 Bedroom & Den

710 sq ft



# Eden E Plan Corner 3 Bedroom & Nook

1,206 sq ft Home 102 East



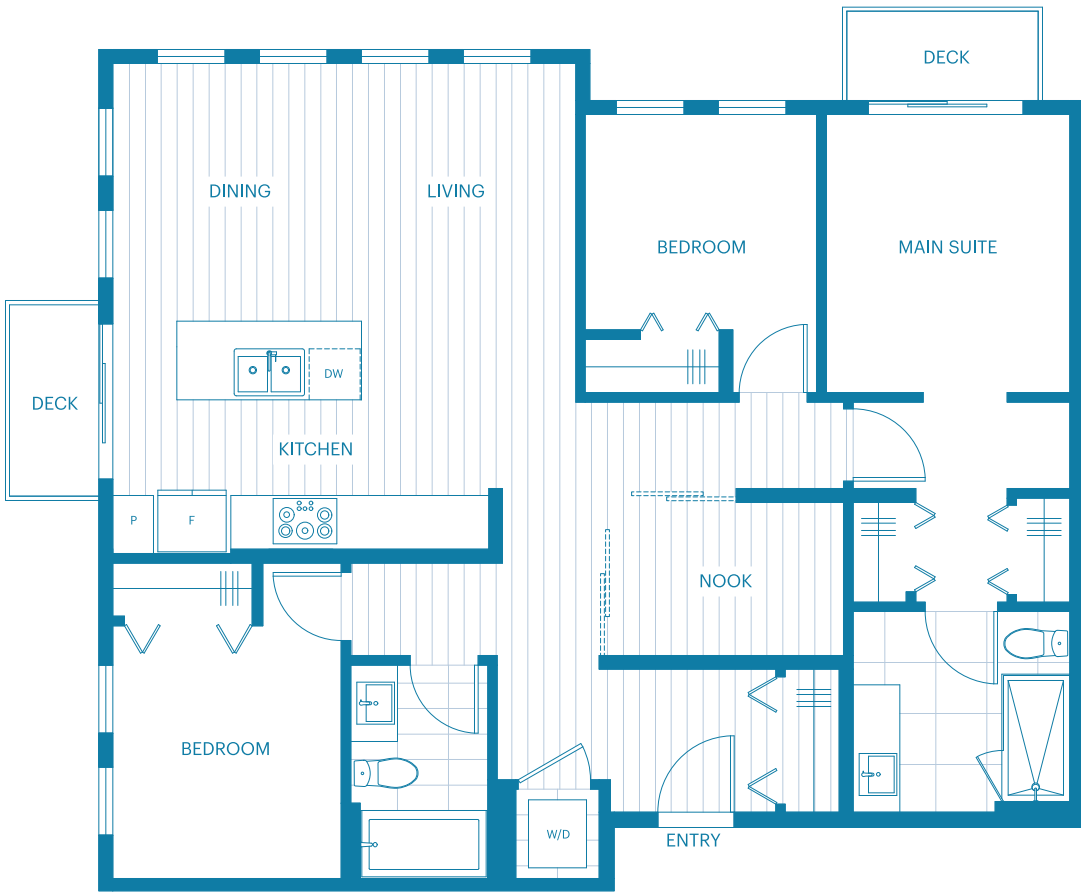
# Eden E Plan Corner 3 Bedroom & Nook

1,206 sq ft Home 108 East



# Eden E1 Plan 3 Bedroom & Nook

1,173 sq ft





# Eden E1 Plan 3 Bedroom & Nook

1,173 sq ft Home 103 East



# Specifications

## The Look

For Allison's interiors we are excited to introduce a new take on classic design, comfortably familiar but designed for today. Homes at Allison have a warm colour palette in a rich navy, oyster grey or white, accented by champagne bronze pulls throughout and stunning fixtures in the kitchen.

### INSIDE THE HOME

- Most homes at Allison have 10-foot ceilings, meaning more volume, more natural light and more storage
- Light oak finish laminate flooring throughout (except bedrooms)
- Cut pile carpeting throughout bedrooms
- Oversized 7-foot windows increase natural light
- Contemporary baseboard and doorway trims blend a modern form with classic proportions
- Recessed LED pot lights in carefully selected locations
- Reinforced television wall with cord-concealing conduit for wall-mounted big screen TVs
- Plenty of storage in closets and pantries in some homes
- Parkade roughed-in for electric vehicle charging capabilities

### INSIDE THE KITCHEN

- Contemporary take on shaker-style cabinetry in rich navy, oyster grey or white colour schemes
- Knobs and pulls in champagne bronze with contemporary detailing of classic shapes
- Warm white textured backsplash with handcrafted effect
- Quartz stone countertops with a cast enamel single bowl sink in most homes
- Pull-down spray faucet in champagne bronze
- Under-cabinet integrated task lights
- Some of our Bond and Eton Homes have large built-in kitchen islands
- Appliances (B,E,E1 Homes)
  - › 32" stainless steel refrigerator
  - › 30" electric cooktop
  - › 30" wall oven
  - › 24" fully integrated dishwasher
  - › 30" wall mount range hood
  - › Option to add microwave
- Appliances (All Other Homes)
  - › 24" stainless steel refrigerator
  - › 24" electric cooktop
  - › 30" wall oven
  - › 24" fully integrated dishwasher
  - › 24" wall mount range hood or;
  - 24" microwave hood fan

### INSIDE THE BATHROOM

- Contemporary take on shaker-style cabinetry in rich navy, oyster grey or white colour schemes
- Oversized porcelain tiles line the floor
- Ensuite porcelain floor tiles are warm grey large format porcelain that draws inspiration from natural stones
- Ensuite wall tile is vertically stacked classic white adding texture and depth
- White porcelain vanity sinks
- Quartz stone countertops
- Deep soaker tubs in white acrylic
- Single-lever faucets in polished chrome
- White dual flush toilet (high efficiency)
- Showerheads and handle sets in polished chrome

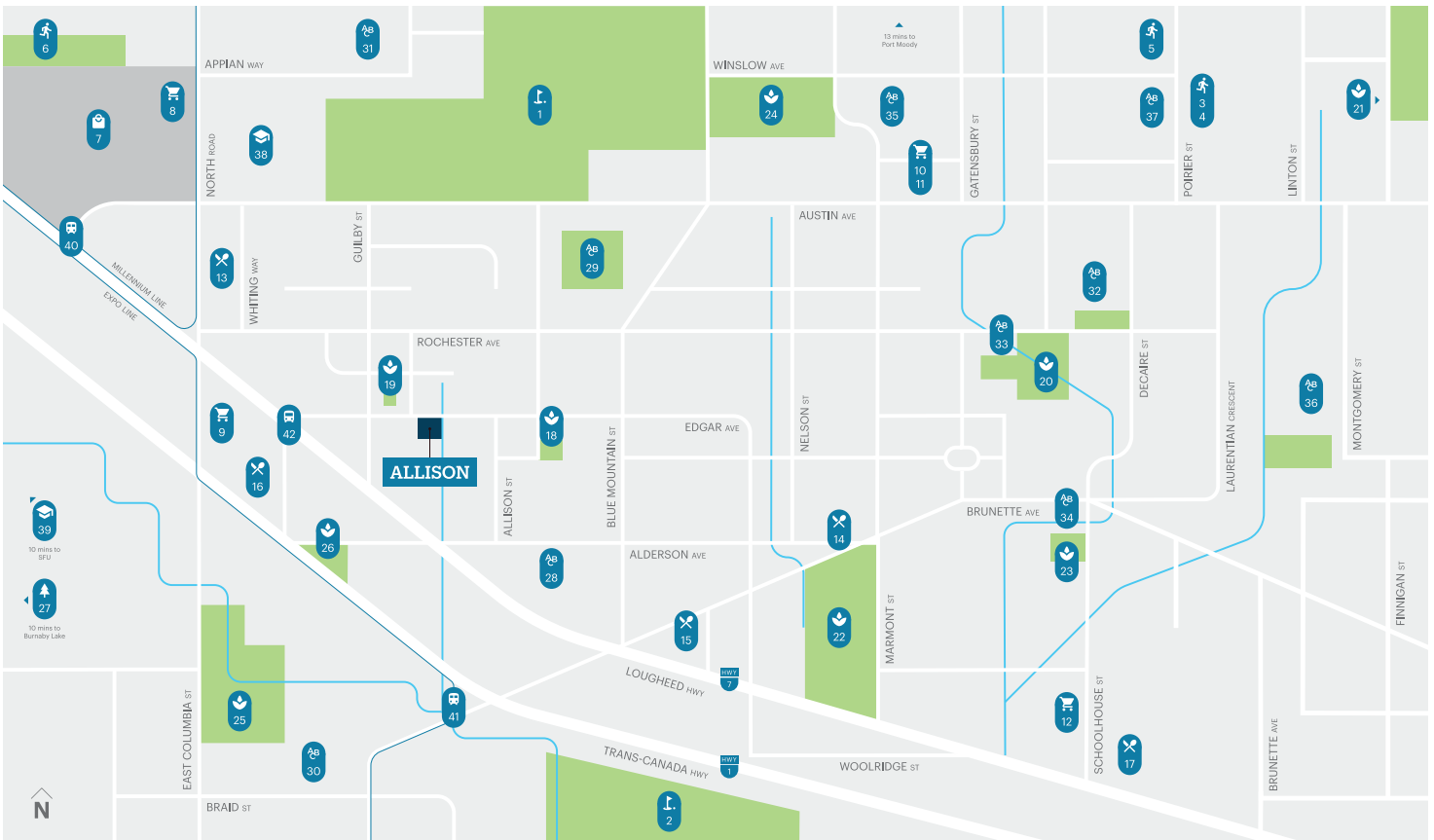
### MOSAIC HOME CARE

- From technical questions to design details, our Home Care team conducts meticulous assessments of each home before you even step inside. Our team is there to educate you about your new home and to provide support when you need it:
  - › 1-Year Materials and Labour Warranty
  - › 2-Year Materials and Labour Warranty for Distribution Systems
  - › 5-Year Building Envelope Warranty
  - › 10-Year Structural Warranty
- Mosaic's Home Care orientation program and on-call homeowner support

### COMMUNITY SPACES

- Shared indoor community space for fitness
- Outdoor community courtyard nestled between buildings for privacy
- Kids play area
- Private space for meeting

# Neighbourhood Map



## Legend

- Allison
- Parks

## Recreation

1. The Vancouver Golf Club
2. Eaglequest Golf
3. Poirier Sport Leisure Complex
4. Coquitlam Public Library
5. The Tennis Centre Coquitlam
6. Cameron Recreation Complex

## Shopping

7. The City of Lougheed Shopping Centre
8. Save-On-Foods
9. H-Mart Coquitlam
10. Safeway Austin Heights
11. Blue Mountain Produce
12. Real Canadian Superstore

## Restaurants

13. The Taphouse Coquitlam
14. Smoking Pig
15. My Greek Taverna Restaurant
16. Joey Coquitlam
17. Cactus Club

## Parks

18. Burns Park
19. Guilby Park
20. Rochester Park
21. Mundy Park
22. Mackin Park
23. Schoolhouse Park
24. Blue Mountain Park
25. Hume Park
26. Lower Lougheed Park
27. Burnaby Lake

## Education

28. Alderson Elementary
29. Lord Baden-Powell
30. Hume Park School
31. Roy Stibbs Elementary
32. École Rochester Elementary
33. École Maillard Middle School
34. Inquiry Hub Secondary School
35. Como Lake Middle School
36. École Montgomery Middle School
37. Centennial Secondary
38. Coquitlam College
39. Simon Fraser University

## Transportation

40. Lougheed Town Centre Station
41. Braid Station
42. EB Lougheed Hwy at Guilby St

# Mosaic Past Communities

A Better Home

## HAMILTON

SFU, Burnaby



## PARKER

Surrey City Centre



## EDWARD

Vancouver, West Side



## GUILDHOUSE

Surrey City Centre



## PARKSIDE AT LYNN

North Shore



## CAMBRIA PARK

Vancouver, West Side





MOSAIC